

PGY1 Community Pharmacy Residency Open Forum December 6, 2010



Open Forum Agenda



- PGY1 Community Pharmacy Residency Program Update
- 2010 Resident Matching Program/Filled Positions
- 2009-10 Resident Exit Survey
- Key Strategies to Create a Quality Program
- Commission on Credentialing
- NACDS Foundation Grant Funding Announcement
- Update on APhA2011 CPRP Activities
- APhA e-Communities
- Open discussion

PGY1 Community Pharmacy Residency Update



- **Currently 73 programs (126 positions)**
 - 12 new accreditation applications (Pre-Candidate/Candidate) received in 2010
 - 64 programs in the accreditation pool (117 positions) -**88%**
 - ✦ Includes pre-candidate, candidate and accredited programs
 - 62 programs affiliated with a school/college of pharmacy (**85%**)
- **Trends**
 - Health systems with community pharmacies
 - Increasing interest from colleges of pharmacy – APPE/IPPE
 - Increased interest from large chains
 - Expansion of number of positions in established programs

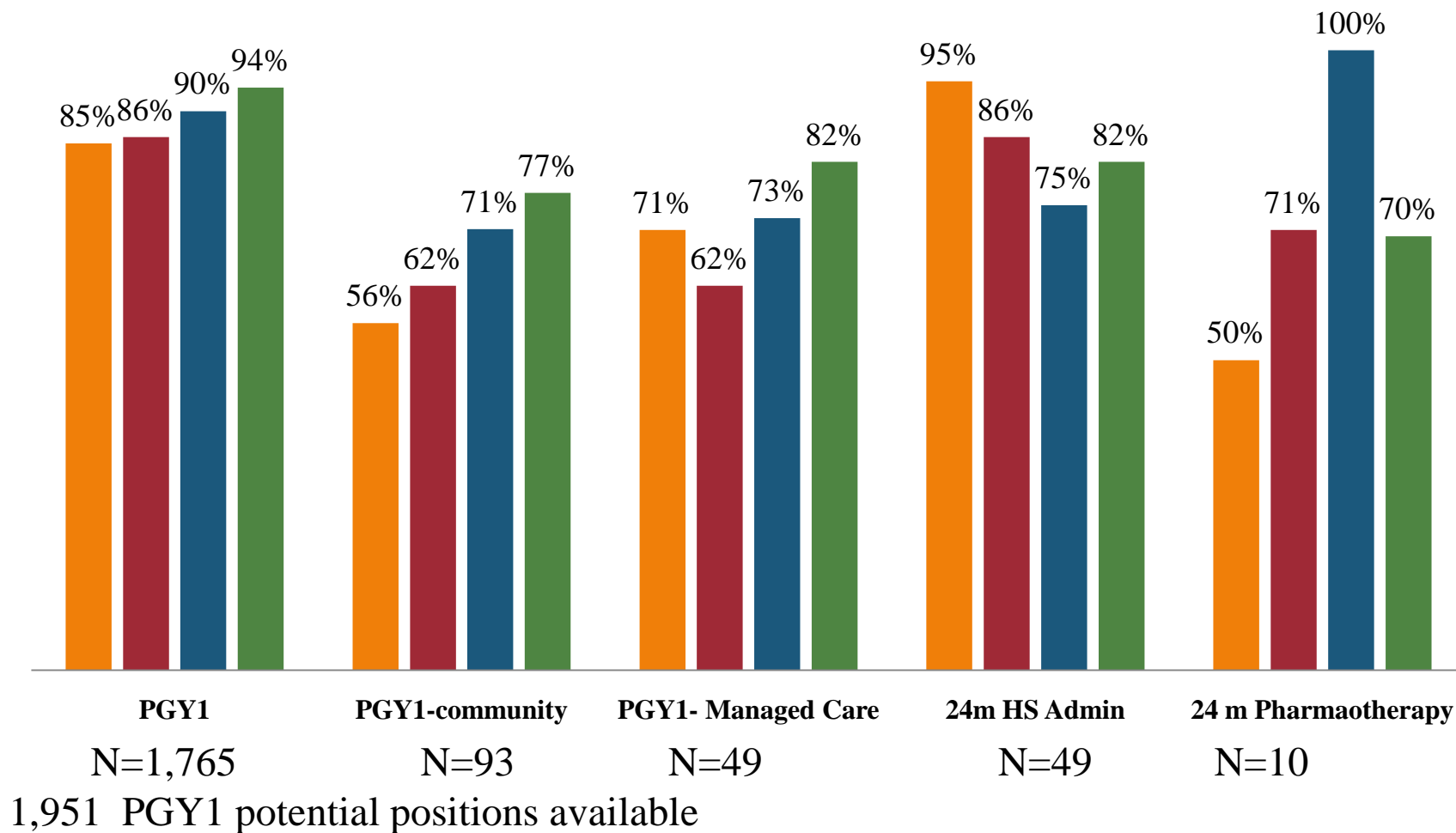
Distribution of Accredited Programs Since 1999



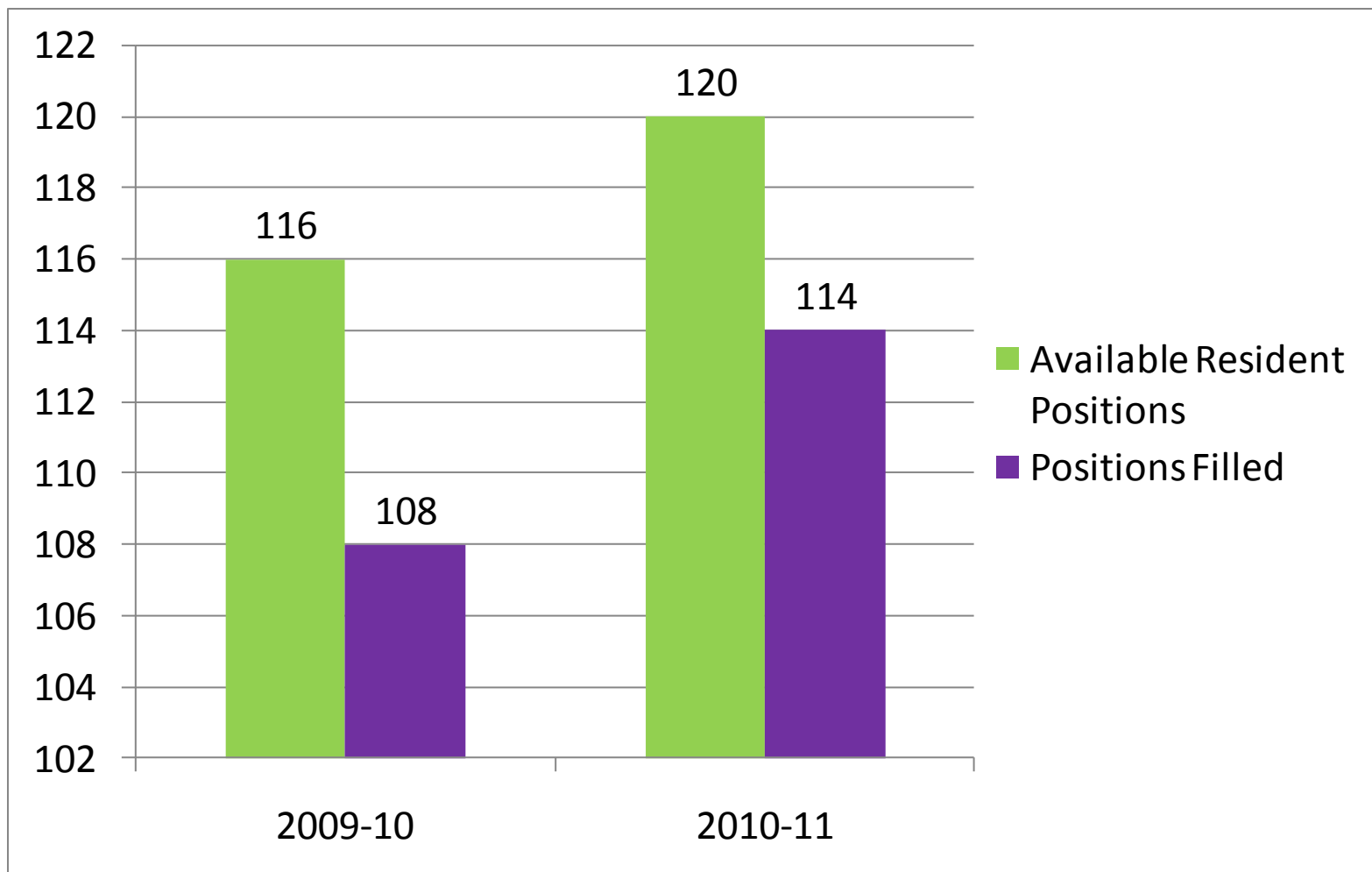
- ✦ 1999: 2 programs (6 positions)
- ✦ 2000: 7 programs (12 positions)
- ✦ 2001: 16 programs (34 positions)
- ✦ 2002: 30 programs (48 positions)
- ✦ 2003: 34 programs (64 positions)
- ✦ 2004: 35 programs (76 positions)
- ✦ 2005: 37 programs (79 positions)
- ✦ 2006: 39 programs (77 positions)
- ✦ 2007: 44 programs (79 positions)
- ✦ 2008: 54 programs (107 positions)
- ✦ 2009: 58 programs (111 positions)
- ✦ **2010: 64 programs (117 positions)**

% of PGY1 entry positions filled in the Match

2007 2008 2009 2010



PGY1 Community Pharmacy Residency Filled Positions



2009-10 PGY1 Community Resident Exit Survey



- Yields important insight and trending
- 2009-10 Survey Conducted by APhA & ASHP
- Year 9 of survey
- 99 residents surveyed – 57 responded – 58% response
- Print copies available
- Posted on www.pharmacist.com

PGY1 Community Pharmacy Accreditation Survey Findings



- **Patient Care**
 - Resident experience with a variety of patients/conditions
 - Patient care service requirements (7.7)
- **Medication safety**
 - Medication error reporting
 - Evaluation of service quality
- **Medical informatics**
- **Systematic approach to training**
 - Descriptions of learning experiences with corresponding activities
 - Tracking of resident progress
 - Development and update to resident's customized plan
- **Preceptors**
 - Preceptor development and training

Commonly Cited Areas of Partial Compliance in PGY1 Community Pharmacy Programs



- Formal process for ranking candidates for selection
- Documented policy for resident leave, resident licensure, and graduation requirements
- Terms, conditions, and benefits of the resident appointment
- Resident certificate language
 - The residency program in PGY1 Community Pharmacy conducted by (name of the organization, city, state) is accredited by the American Society of Health-System Pharmacists, in partnership with the American Pharmacists Association.

Key Strategies to Create an Excellent PGY1 Community Residency Program



- **Having quality preceptors**
- **Having sufficient number of qualified preceptors**
- **Providing preceptor role modeling & instruction**
- **Having a program that is systematically designed (RLS)**
- **Using an effective evaluation system**
- **Having patient care services of sufficient breadth and depth to ensure adequate resident learning**
- **Having a safe medication use system**

Commission on Credentialing Accreditation Status/Length



- **Length of accreditation**
 - 1, 3 or 6 years
- **Basis for accreditation status/length**
 - 1 year: New or existing program with major quality issues as noted by areas of PC or NC
 - 3 years: Program, especially newer programs, with several quality issues that need addressed through quality improvement
 - 6 years: Mature program with no major quality issues

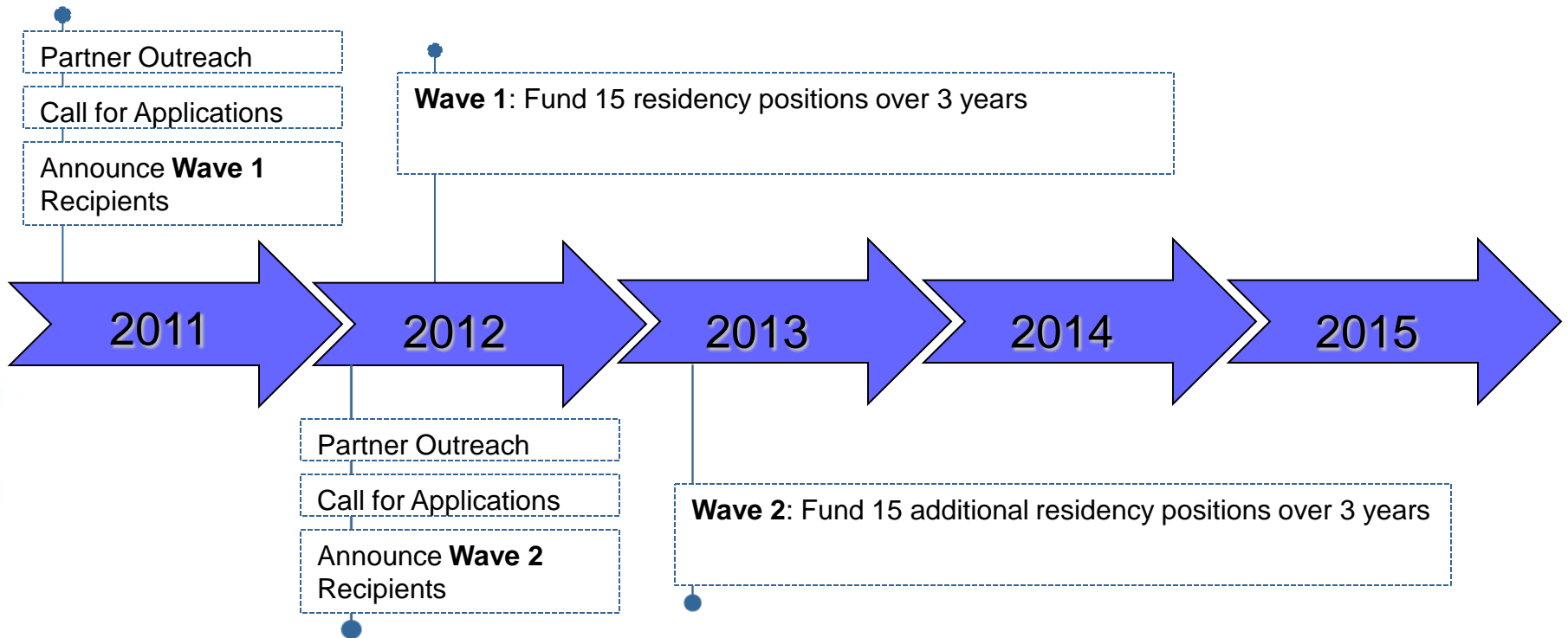
Coming soon: \$1.5 million in funding to jump-start community pharmacy residencies nationwide

Grants will be available to:

- New programs
- Successful programs looking to expand capacity



Timeline



APhA2010 CPRP Activities



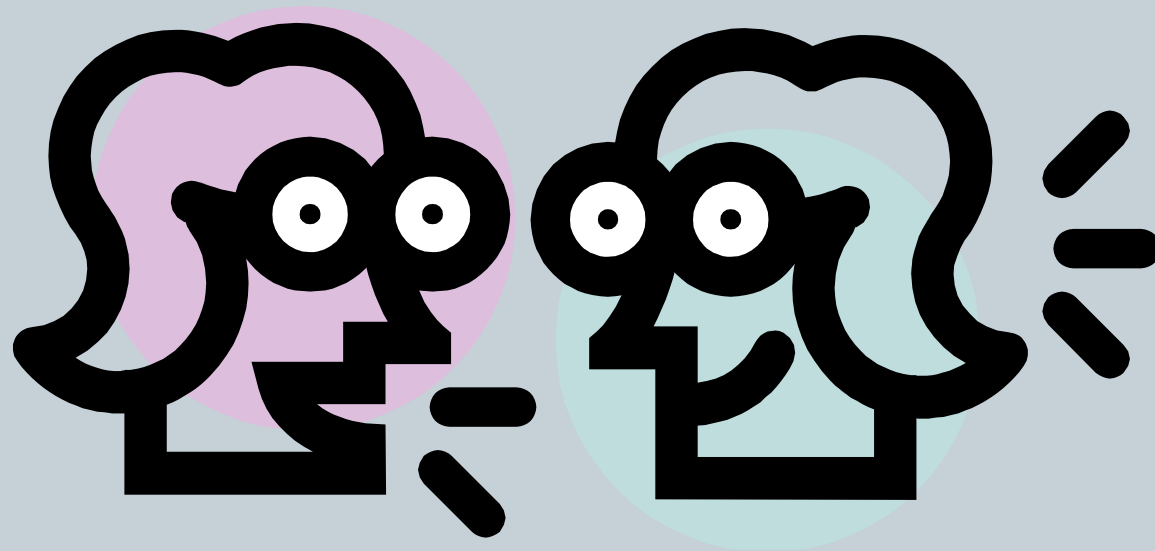
- Residency CE Session – “Good to Great PGY1 Community Pharmacy Residency Programs” – Sunday, March 27th - 3:30-5:30 pm
- Resident & Preceptors/Director Open Forum, Saturday, March 26th – 5:00-6:00 pm
- CPRP Networking Forum, Saturday March 26th, 6:00-6:45 pm
- Residents & Preceptors Poster Session, Sunday, March 27th
- Residency Accreditation Discussion forum, Monday, March 28th, 8:30-10:00 am

APhA CPRP e-Communities



- **APhA e-Communities**
 - Internet-based forums designed to allow members to ask questions, share ideas and network with colleagues from across the country.
- **APhA CPRP Directors/Preceptors e-Community**
 - Closed forum for current CPRP Directors & Preceptors
- **APhA CPRP Residents e-Communities**
 - Closed forum for current CPRP Residents
- **How to join the e-Communities**
 - Login: www.pharmacist.com
 - Click: e-Communities
 - Follow steps to register

Open Forum Discussion





THANK YOU