

PGY1 COMMUNITY PHARMACY RESIDENCY OPEN FORUM DECEMBER 5, 2011



46th ASHP Midyear Clinical Meeting & Exhibition
New Orleans Ernest N. Morial Convention Center | December 4 – 8, 2011 | New Orleans, Louisiana



OPEN FORUM AGENDA

- PGY1 Community Pharmacy Residency Program Update - Role/Stats/Trends/Emerging Issues
- 2011 Resident Matching Program/Filled Positions
- 2010-11 Resident Exit Survey
- Key Strategies to Create a Quality Program
- Common Issues from Accreditation Site Surveys
- Commission on Credentialing Information
- Other Important Topics
- Update on APhA2012CPRP Activities
- APhA e-Communities
- APhA Community Residency Advisory Panel
- Open discussion

ROLE OF PGY1 COMMUNITY PHARMACY RESIDENCY PROGRAMS

- Development of pharmacy practice leaders to advance the profession
 - Academia
 - Chain Community Pharmacy
 - Independent Community Pharmacy
 - Other (e.g. ambulatory care, managed care, health systems)
- Development of community based practice sites
 - Advance the development of clinical pharmacy services in the community pharmacy settings under financially viable business models
 - Bridge the gap between academia and practice
 - Serve as IPPE and APPE training sites
 - Participate in practice-based research networks/demo sites

CURRENT PGY1 COMMUNITY STATISTICS

◎ Total Number of Programs:

- 2000: 26 programs (48 sites)
- 2011: 77 programs (135 positions)

◎ Total Number of Programs in Accreditation Pool:

- 2000: 7 programs (12 sites)
- 2011: 75 programs (131 positions)

Tracking stats: programs vs. sites vs. positions



DISTRIBUTION OF PROGRAMS IN ACCREDITATION POOL

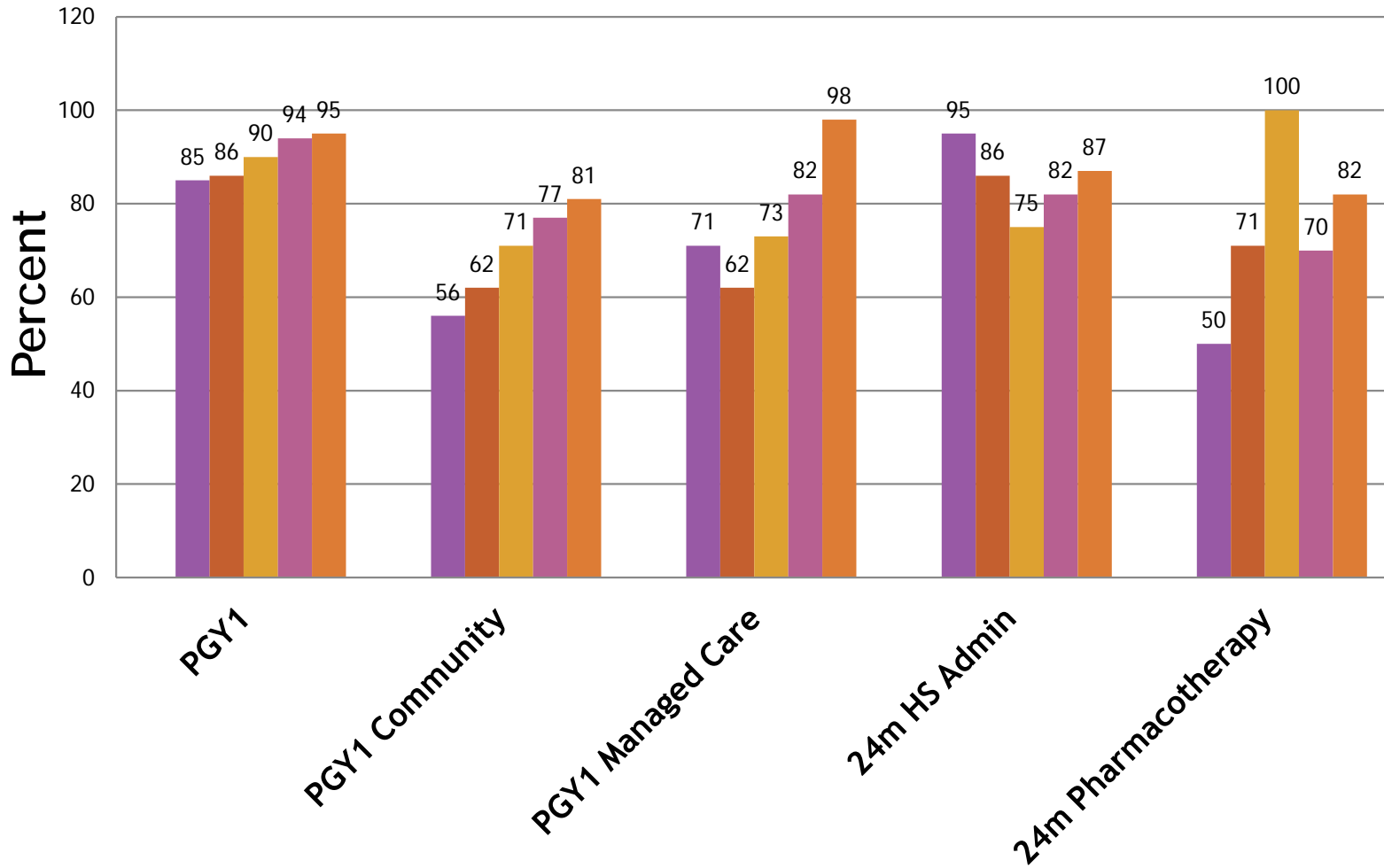
- ✦ 1999: 2 programs (6 positions)
- ✦ 2000: 7 programs (12 positions)
- ✦ 2001: 16 programs (34 positions)
- ✦ 2002: 30 programs (48 positions)
- ✦ 2003: 34 programs (64 positions)
- ✦ 2004: 35 programs (76 positions)
- ✦ 2005: 37 programs (79 positions)
- ✦ 2006: 39 programs (77 positions)
- ✦ 2007: 44 programs (79 positions)
- ✦ 2008: 54 programs (107 positions)
- ✦ 2009: 58 programs (111 positions)
- ✦ 2010: 64 programs (117 positions)
- ✦ **2011: 75 programs (131 positions)**

PGY1 COMMUNITY PHARMACY RESIDENCY UPDATE

○ Trends/Emerging Issues

- Significant increase in accreditation surveys - 2012
- Significant increase in accreditation participation (>97%)
- Increased interest in programs by schools/colleges
- Continued growth/expansion - hospital/health-systems
- Increased demand for residencies by students
- Increased involvement by chains
- Increasing capacity of existing programs
- New funding sources through the NACDS Foundation Community PREP program
- New opportunities for PGY1 Community graduates

% of PGY1 Entry Positions Filled in the Match 2007 --> 2011



2011 n=1947

n=110

n=55

n=39

n=9

PGY1 COMMUNITY RESIDENCY FILLED POSITIONS



2010-11 PGY1 COMMUNITY RESIDENT EXIT SURVEY

- ⦿ Yields important insight and trending
- ⦿ 2010-11 Survey Conducted by APhA & ASHP
- ⦿ Year 10 of survey
- ⦿ 113 residents surveyed - 82 responded
- 72% response
- ⦿ Print copies available
- ⦿ Posted on www.pharmacist.com

PGY1 COMMUNITY PHARMACY COMMON ACCREDITATION SURVEY FINDINGS

- Patient Care
 - Resident experience with a variety of patients/conditions
 - Patient care service requirements (7.7)
- Medication safety
 - Medication error reporting
 - Evaluation of service quality
- Medical informatics
- Systematic approach to training
 - Descriptions of learning experiences with corresponding activities
 - Tracking of resident progress
 - Development and update to resident's customized plan
- Preceptors
 - Preceptor development and training

COMMONLY CITED AREAS OF PARTIAL COMPLIANCE IN PGY1 COMMUNITY SITE SURVEYS

- Customized plans - initial & quarterly updates
- Breadth/Depth of Patient Care Services
- Tracking of progress on achievement of goals
- Policies
 - Formal process for ranking candidates for selection
 - Documented policy for resident leave, resident licensure, and graduation requirements
 - Terms, conditions, and benefits of the resident appointment
- Resident certificate language

KEY STRATEGIES TO CREATE AN EXCELLENT PGY1 COMMUNITY PROGRAM

- ◉ Have quality preceptors
- ◉ Have sufficient number of qualified preceptors
- ◉ Provide preceptor role modeling & instruction
- ◉ Have a program that is systematically designed (RLS)
- ◉ Use an effective evaluation system
- ◉ Have patient care services of sufficient breadth and depth to ensure adequate resident learning
- ◉ Have a safe medication use system
- ◉ Be in compliance with the accreditation standard

COMMISSION ON CREDENTIALING ACCREDITATION STATUS/LENGTH

- Length of accreditation
 - 1, 3 or 6 years
- Basis for accreditation status/length
 - CRITICAL FACTORS
- Quality Improvement of Programs
 - Focus on addressing & improving CRITICAL FACTORS

COMMISSION ON CREDENTIALING EMERGING ISSUES

- ◉ Duty hours
- ◉ Changes to standards to address capacity and quality
- ◉ New standards development

OTHER IMPORTANT TOPICS

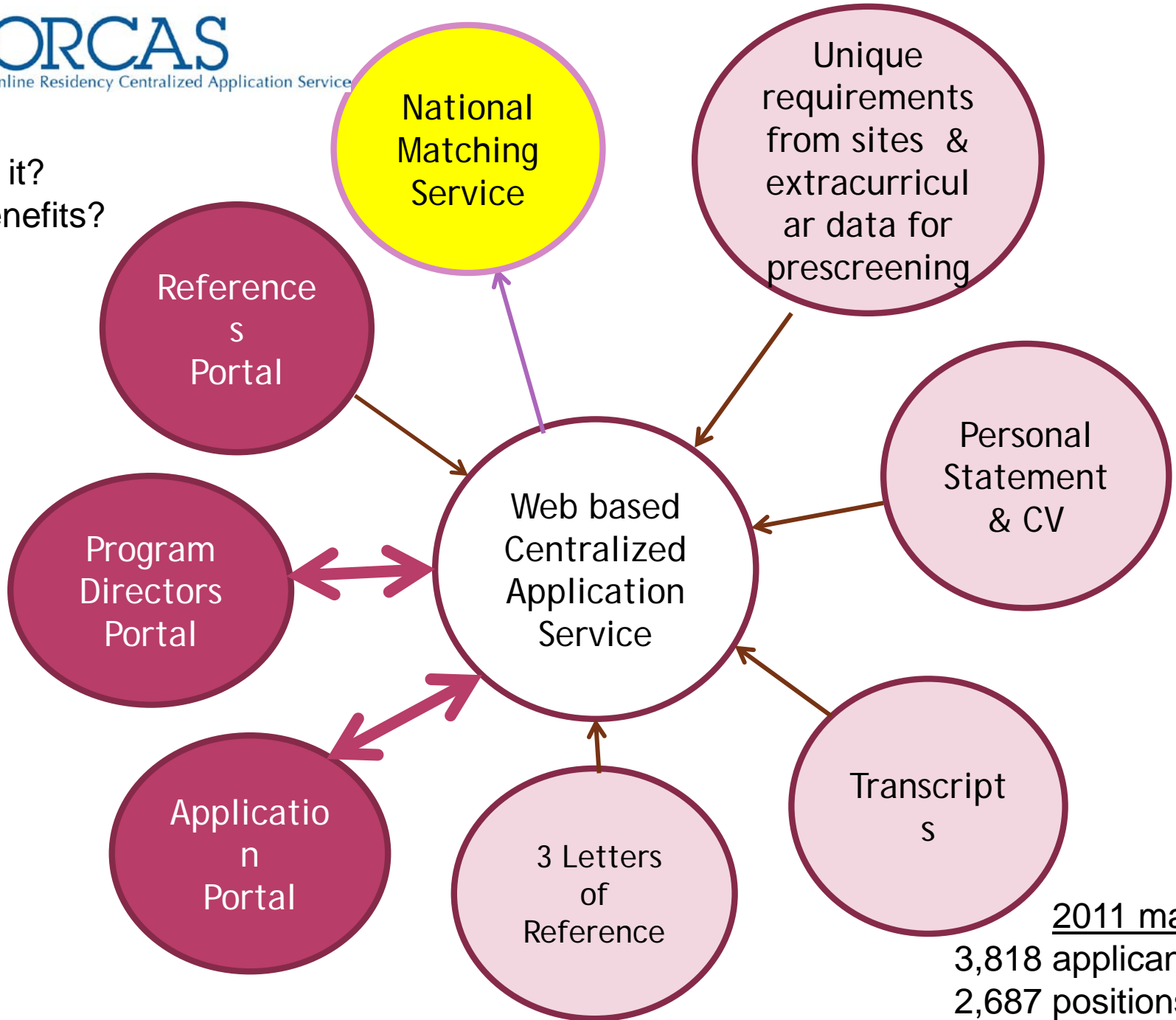
- ◉ Post Match Dynamic List

- ◉ Centralized Application

Process -



What is it?
Who benefits?



2011 match
3,818 applicants
2,687 positions

BENEFITS TO PROGRAMS

- ◉ Decreased administrative burden
- ◉ Electronic tracking of application progress
- ◉ Prescreening of applicant eligibility
- ◉ Organize large numbers of candidates using site determined sorting
- ◉ Flexibility to add site unique requirements
- ◉ No fee for programs who implement in initial year
- ◉ Preload all programs without fee, must opt out
- ◉ System available for post match process

TENTATIVE TIMELINES

Spring 2012	Progress update communication at regional residency conferences
Summer 2012	Demos at National Residency Preceptor Conference
By Oct 2012	Confirmation of programs using PhORCAS
are up	Confirm application dates & application requirements to date in ASHP on-line directory
Oct 2012	PhORCAS Opens for applicants to enter data
Nov 2012	Applicants can register for NMS & submit in PhORCAS
Mar 2013	MATCH - PhORCAS closes until post match
Post match only available	PhORCAS reopens for applicants still seeking positions - open positions in Post match Dynamic list are
July 2013	PhORCAS post match closes

APHA2012 PGY1 COMMUNITY ACTIVITIES

- ◉ Residency CE Session - "Good to Great PGY1 Community Pharmacy Residency Programs" - Sunday, March 11th - 3:30-5:30 pm
- ◉ Resident & Preceptors/Director Open Forum, Sunday, March 11th - 11:00-12:00 am
- ◉ CPRP Networking Forum, Saturday March 10th 5:15 pm
- ◉ Residency Accreditation Discussion forum, Monday, March 12th, 8:30-10:00 am

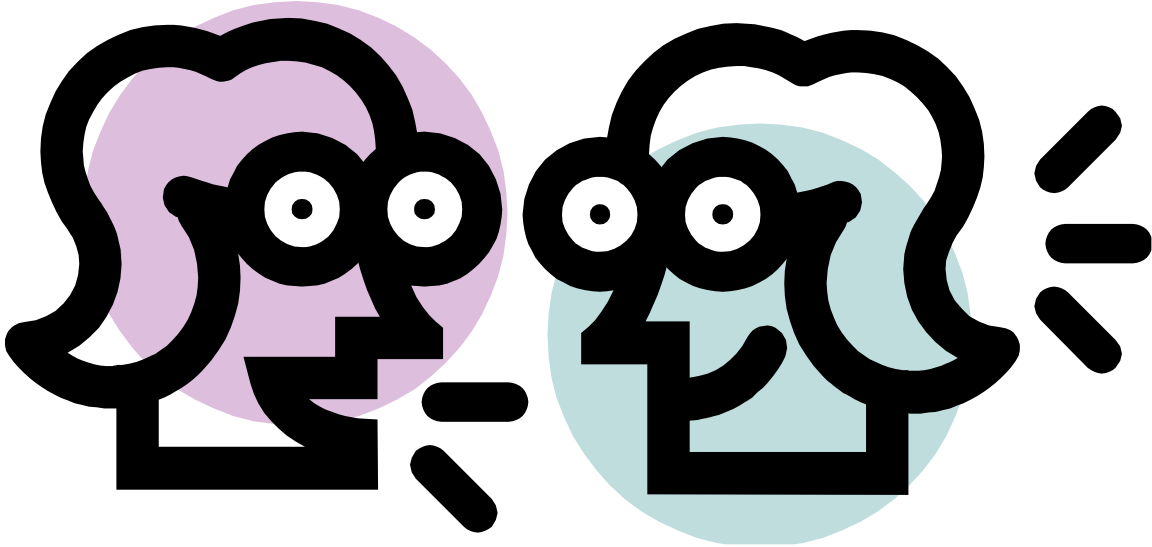
APHA CPRP E-COMMUNITIES

- APhA e-Communities
 - Internet-based forums designed to allow members to ask questions, share ideas and network with colleagues from across the country.
- APhA CPRP Directors/Preceptors e-Community
 - Closed forum for current CPRP Directors & Preceptors
- APhA CPRP Residents e-Communities
 - Closed forum for current CPRP Residents
- How to join the e-Communities
 - Login: www.pharmacist.com
 - Click: e-Communities
 - Follow steps to register

APHA PGY1 COMMUNITY RESIDENCY ADVISORY PANEL

- ◉ Jamie Montuoro (Chair), Smith's (a division of Kroger), Utah
- ◉ Rebecca Cupp, University of Southern California (ASHP COC)
- ◉ Heather Rickertsen, Mercy Family Pharmacy, Iowa
- ◉ Tim Warner, University of Rochester Medical Center, New York
- ◉ Cherokee Layson-Wolf, University of Maryland, Baltimore
- ◉ Janelle Ruisinger, University of Kansas, Kansas City
- ◉ Jennifer Helmke - Former Virginia Commonwealth University Resident
- ◉ Aparna Reddy, Student Pharmacist - APhA-ASP appointee

OPEN FORUM DISCUSSION



Thanks

The word "Thanks" is written in a bold, purple, rounded font with a black outline. The letter 'h' is replaced by a tan-colored hand with the index finger pointing upwards. Three green, jagged lines radiate from the top of the hand, resembling sparkles or a celebratory gesture. The text is set against a light blue, trapezoidal background that is slightly tilted.

CONTACT INFORMATION

James A. Owen, BS Pharm, PharmD, BCPS
Senior Director, Professional Practice
American Pharmacists Association
2215 Constitution Avenue NW
Washington DC 20037-2985
202-429-7540 (office)
202-347-5679 (fax)
jowen@aphanet.org