

Executive Committee



PPictured from left to right: Kelly Smith; James Trovato, Mary Hess; Top row: Sandra Oh Clarke, Director, Section of Clinical Specialists and Scientists; Lea Eiland; Heath Jennings; Erin Fox

Chair (2009-2010)

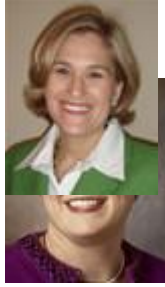
James A. Trovato, Pharm.D., M.B.A., BCOP
Baltimore, MD



James A. Trovato, Pharm.D., M.B.A., BCOP is Associate Professor of Pharmacy Practice and Science; Director, Oncology Pharmacy Residency Program, University of Maryland School of Pharmacy; and Oncology Clinical Specialist, University of Maryland Greenebaum Cancer Center. He received his B.S. in pharmacy from Massachusetts College of Pharmacy and his Pharm.D. from Purdue University. Trovato completed an ASHP-accredited oncology pharmacy residency at The University of Texas Health Science Center at San Antonio. He is an active clinical investigator with a principal interest in symptom management relating to cancer treatment. Trovato's ASHP service includes Director-at-Large, Section of Clinical Specialists and Scientists; Chair of the Council on Education and Workforce Development; member of the AJHP Editorial Board; delegate to the ASHP House of Delegates; member of the Ad Hoc Committee on Pharmacy Educators; member of Public Relations Advisory Network; ASHP School of Pharmacy faculty liaison; and local coordinator for the ASHP Clinical Skills Competition.

James A. Trovato can be e-mailed at jtrovato@rx.umaryland.edu.

Immediate Past Chair (2009-2010)



Kelly M. Smith, Pharm.D., FASHP
Lexington, KY

Kelly M. Smith, Pharm.D., FASHP is Associate Professor/Pharmacy Practice and Science, and Director, Residency Program Advancement at the University of Kentucky (UK) College of Pharmacy. At UK Hospital, she serves as Medication Use Policy Clinical Specialist and Director, Postgraduate Year One Pharmacy Residency.

A University of Georgia graduate, Smith completed a drug information residency at University Medical Center (now Shands Jacksonville). Smith's ASHP service includes terms as Vice Chair/Chair/ Past Chair, Commission on Credentialing; alternate state delegate; AJHP invited author and peer reviewer; and frequent meeting presenter and peer reviewer. She has held leadership roles in KSHP, ACCP, and University HealthSystem Consortium Pharmacy Council. Smith has received the AACP Innovations in Teaching, KSHP Pharmacist of the Year, and UK Residency Preceptor of the Year awards. Her practice, teaching, and scholarship focus on evidence-based approaches to safe and effective medication-use systems and novel approaches to pharmacy education and residency training.

Kelly M. Smith can be e-mailed at sections@ashp.org.

Director-at-Large (2008-2010)

Erin R. Fox, Pharm.D.

Salt Lake City, UT



Erin R. Fox, Pharm.D. is Drug Information Specialist and Clinical Coordinator at the University of Utah Hospitals and Clinics Drug Information Service and Adjunct Associate Professor, Department of Pharmacotherapy, University of Utah College of Pharmacy. She received her Pharm.D. from the University of Utah and completed a

specialized residency in drug information at the University of Utah Hospitals and Clinics. Fox leads the University of Utah's drug shortage project that provides content for the ASHP Drug Shortage Resource Center. Fox has served the ASHP Section of Clinical Specialists and Scientists as Network Facilitator for Drug Information and Pharmacoeconomics, as a Meeting Programming Associate, and as Chair of the Section's Programming Committee 2005-2006. She is currently the Chair of the Expert Panel for revision of the ASHP Drug Shortages Guidelines. Fox is also active in the Utah affiliate of ASHP by serving in elected and appointed positions.

Erin R. Fox can be e-mailed at sections@ashp.org.

Director-at-Large (2009-2011)

Lea S. Eiland, Pharm.D., BCPS

Huntsville, AL

Lea S. Eiland, Pharm.D., BCPS is an Associate Clinical Professor of Pharmacy Practice with Auburn University Harrison School of Pharmacy and a Clinical Associate Professor of Pediatrics with the

University of Alabama at Birmingham School of Medicine, Huntsville Regional Medical Campus. She received her Pharm.D. degree from The University of Texas and completed an ASHP-accredited pediatric specialty residency at Texas Tech University. Eiland has been an active member of ASHP, serving as a member, Vice-Chair and Chair of the Council on Education and Workforce Development; member of the Task Force on Pharmacy's Changing Demographics; student member of the Task Force for Organizational Structure; Pediatric/OB-GYN/Neonatal Network Facilitator; and alternate state and student delegate. She has published in AJHP and serves as a manuscript and poster reviewer. Eiland is a Past President of AISHP and faculty advisor for Auburn student chapter. She has also received the AISHP Outstanding Pharmacy Practitioner Award. Lea S. Eiland can be e-mailed at eilanls@auburn.edu.

Chair-Elect (2009-2010)

Mary M. Hess, Pharm.D., FCCM
Philadelphia, PA



Mary M. Hess, is Associate Dean, Jefferson School of Pharmacy, and Associate Professor in the Department of Pharmacy Practice. She received a B.S. in pharmacy from the University of Missouri and Pharm.D. from the St. Louis College of Pharmacy. She completed a critical care/nutrition residency and critical care fellowship at the University of Tennessee. Hess is active as a critical care clinician, researcher, and educator. Service to ASHP includes network specialist (twice); member of the Commission on Credentialing (2001–2008), including a term as Chair; and member of the development and preceptor team for the ASHP Foundation Critical Care Traineeship program. Local service includes state society program chair, coordinator for the ASHP Clinical Skills Competition, and Advisory Board member for an ASHP-accredited technician training program. In addition, Hess has received an ASHP Best Practice Award for clinical services.

Mary M. Hess can be e-mailed at sections@ashp.org.

Director-at-Large Elect (2009-2010)

Heath R. Jennings, Pharm.D., BCPS
Chicago, IL



Heath R. Jennings, is the Director of Pharmacy Acute Care Services, Investigational Drug Services, and Graduate Pharmacy Education as well as an Assistant Professor at the University of Chicago Medical Center. In addition to B.S. and Pharm.D. degrees, he completed ASHP-accredited residencies in pharmacy practice and critical care at the University of Kentucky and graduate research training in clinical pharmaceutical sciences and a cardiology pharmacy fellowship.

Active in ASHP and state affiliates in Kentucky and Illinois, Heath has served as member of the House of Delegates for ASHP; Treasurer, Board of Directors, and Program Committee for KSHP;

and Governmental Affairs and Professional Affairs Committees for ICHP. He has published in and provides referee services to AJHP and has presented nationally and internationally on cardiovascular pharmacology, clinical pharmacy training, and pharmacy productivity systems. His recognitions include the ASHP Best Practice Award and KSHP Pharmacist of the Year. Heath R. Jennings can be e-mailed at sections@ashp.org.

ASHP Staff

Sandra Oh Clarke, R.Ph.

Director, Section of Clinical Specialists and Scientists



Sandra Oh Clarke is the Director for the Section of Clinical Specialists and Scientists. In this role Sandy serves as an information resource and provides guidance to ASHP members regarding science and scientific developments affecting pharmacy practice in health systems. She also serves as secretary to the Section executive committee and coordinates activities to accomplish the objectives established by the Section.

Sandy has been with ASHP since 1995 and most recently was Senior Director, Scientific Projects and CE Liaison with ASHP Advantage where she developed live and web-based educational programming for pharmacists and other health care professionals. She started at ASHP in the Educational Services Division where she played a key role in the development of the “live” and “web-based” Oncology and Psychiatric Pharmacy Specialty Practice Examination Review Courses. Prior to ASHP, Sandy held the roles of Coordinator, Decentralized Services and Drug Use Evaluation Manager at Erie County Medical Center. In addition, she was a clinical preceptor and Drug Use Evaluation Coordinator at the University of Maryland Medical System where she also completed a residency. Her clinical practice area was in internal medicine where she also served as a preceptor for pharmacy residents and Pharm.D. students. While in practice Sandy served on numerous pharmacy and hospital committees including Operations, Quality Improvement, P&T and Infection Control Committees. She is a graduate of the Albany College of Pharmacy in Albany, New York.