

PELA® HOSPITAL AT HOME AND ALTERNATE SITES OF CARE:
LEADING PHARMACY SERVICES IN A SHIFTING LANDSCAPE

The ASHP Pharmacy Executive Leadership Alliance (PELA®) convened a virtual conference to discuss how the healthcare industry's shift to lower cost, alternate care settings creates opportunities for pharmacy executives to innovate by adapting, expanding, and establishing pharmacy services that provide care across the continuum.



DRIVERS FOR IMPLEMENTATION OF ALTERNATIVE SITES OF CARE

Hospital bed
shortage

Lowest cost, high-
quality services need

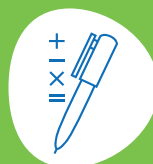


Workforce
management

Payer reimbursement
shifts

Consumer
preferences

LEADERSHIP STRATEGIES FOR PHARMACY ENGAGEMENT
IN ALTERNATE SITES OF CARE



ALIGN WITH
ORGANIZATION
PRIORITIES

SELECT THE
RIGHT TEAM
MEMBERS

USE LEGAL
AND RISK
EXPERTS

EVALUATE
BUDGET
IMPACT

LEVERAGE
PAST
SUCCESSSES

OFFER HIGH-VALUE,
REVENUE-GENERATING
SERVICES

LEADERSHIP STRATEGIES FOR IMPLEMENTING HOSPITAL-AT-HOME PROGRAMS



DESIGNATE
A PHARMACY
COORDINATOR



DEVELOP
MEDICATION
HANDLING
POLICIES



DEVELOP
STANDING
ORDERS



CREATE
ADMISSION
KITS



MONITOR IMPACT
ON STAFFING AND
HOSPITAL STAYS



CREATE NEW
PARTNERSHIPS

COMMON CONSIDERATIONS FOR HOSPITAL-AT-HOME PHARMACY IMPLEMENTATION

1



PATIENT SELECTION
AND TRIAGE

2

MEDICATION
HANDLING



3

INFUSION
POLICIES



4

TECHNOLOGY
AND PATIENT
INFORMATION
MANAGEMENT



5

HOME
STORAGE
AND WASTE
DISPOSAL



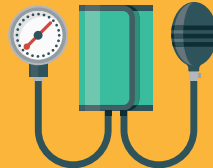
6

WORKFORCE



7

PROVISION OF
CLINICAL SERVICES



8

BILLING, LEGAL,
AND REGULATORY
REQUIREMENTS



For more insights from the PELA® Hospital at Home and Alternate Sites of Care: Leading Pharmacy Services in a Shifting Landscape Conference visit

[ASHP.ORG/PELA](https://www.ashp.org/pela)